

# WANT TO WORK, BUT AFRAID OF LOSING YOUR DISABILITY BENEFITS?

## Attend This Workshop to:

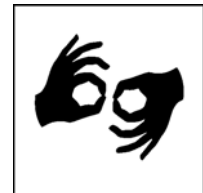
- Learn how incentives can help you achieve self-sufficiency
- Find out how SSA computes trial work
- Meet one-on-one with a Benefits Specialist

## Workshop Details:

- Open to everyone
- Workshop Presenters: Joy Tshako, Social Security Administration  
Camille Chatman, Human Potential Consultants
- Services available for all people, regardless of age, gender, ethnicity, sexual preference, or disability type
- Interpreters available

**2nd Thursday of the month through June 2008**

**The workshop will be held at:**



**Disabled Resource Center (DRC)**  
2750 E. Spring Street #100

## Contacts:

**Dolores Nason**  
DRC Director  
562.427.1000

**Linda Schaedle**  
Disability Program Navigator  
562.570.3738  
Linda\_Schaedle@longbeach.gov

**Patti Kolpa**  
Disability Program Navigator  
562.570.4629  
Patti\_Kolpa@longbeach.gov



3447 Atlantic Ave.  
Long Beach 90807



1900 Atlantic Ave.  
Long Beach 90806



1851 N. Gaffey St., Ste F  
San Pedro 90731



3447 Atlantic Ave.  
Long Beach 90807

ADMINISTERED BY:



562.570.WORK Toll Free 800.292.7200 TTY 562.570.4629 [pacificgatewayworkforce.com](http://pacificgatewayworkforce.com)

Sponsored by Pacific Gateway Workforce Network (Workforce Investment Network funding through the Disability Program Navigator Initiative); Disabled Resource Center; Social Security Administration; Human Potential Consultants

Equal Opportunity Employer/Program. Auxiliary aids and services available upon request to individuals with disabilities. To request a reasonable accommodation, please call 562.570.3738 or TTY 562.570.4629, at least 72 hours prior to event.